

TOUPCAM QUICK GUIDE INSTALLATION MANUAL

January 2013



The lightning flash with an arrowhead symbol within an equilateral triangle is intended to alert the user of the presence of uninsulated "dangerous voltage" within the product's enclosure that may be of sufficient magnitude to constitute a risk of electric shock to persons.



The exclamation point within an equilateral triangle is intended to alert the user of the presence of important operating and maintenance (servicing) instructions in the literature accompanying the appliance.

WARNING!

TO AVOID THE RISK OF FIRE OR ELECTRICAL SHOCK, NEVER EXPOSE THIS PRODUCT TO WATER OR OPERATE IN A HIGH HUMIDITY ENVIRONMENT.

Keep camera away from the following:

- **High temperatures and excessive humidity**
- **Direct sunlight or other heat sources**
- **Dust**
- **Extreme vibration**

If the camera lens becomes dirty, first try blowing dust particles from it. Next use a lint free cloth or proper lens cleaning cloth to wipe the lens gently. Only use approved lens cleaning fluids. Never touch the lens with your fingers! Do not allow the camera to come into contact with water or any other liquid. If water or a foreign substance should get in the camera, unplug the camera immediately and do not attempt to plug in until after a long period of time to allow for drying. This does not necessarily mean it will work again! Do not open the camera case or attempt your own repairs. Internal components may create risk of electrical shock or fire. There are no

user serviceable components inside. Clean the outside of the camera by wiping with a clean, dry cloth. Never use harsh or abrasive cleaners or organic solvents on the camera or any of its parts. If you notice smoke or a strange smell coming from the camera, immediately unplug the camera and consult an authorized dealer.

Trademark and Copyright Information

© COPYRIGHT 2012, **TOUPTTEK PHOTONICS**

All rights are reserved. No part of this document may be photocopied, reproduced, or translated to another language without the prior written consent of **TOUPTTEK PHOTONICS**. The information contained in this document is subject to change without notice. **TOUPTTEK PHOTONICS** shall not be liable for errors contained herein or for consequential damages in connection with the furnishing, performance or use of this material.

Microsoft® and Windows® are U.S. registered trademarks of Microsoft Corporation.

Welcome

Thank you for buying **ToupCam**® high quality digital camera. We suggest you spend a few minutes carefully reading this user manual before installing and using your camera. Please keep this user manual in a safe place for future reference.

Warnings and Precautions

Precautions when using your **ToupCam** Camera



Keep camera away from the following:

- **High temperatures and excessive humidity**
- **Direct sunlight or other heat sources**
- **Dust**
- **Extreme vibration**

If the imaging sensor lens becomes dirty, first try blowing dust particles from it. Next use a lint free cloth or proper lens cleaning cloth to wipe the lens gently. Only use approved lens cleaning fluids. Never touch the lens with your fingers!


Do not allow the camera to come into contact with water or any other liquid. If water or a foreign substance should get in the camera, unplug the camera immediately and do not attempt to plug in until after a long period of time to allow for drying. This does not necessarily mean it will work again! Do not open the camera case or attempt your own repairs. Internal components may create risk of electrical shock or fire. There are no user serviceable components inside.

Clean the outside of the camera by wiping with a clean, dry cloth. Never use harsh or abrasive cleaners or organic solvents on the camera or any of its parts.

If you notice smoke or a strange smell coming from the camera, immediately unplug the camera and consult an authorized dealer.

System Requirements

PC running either Windows ® (32-bit & 64-bit) XP , Vista ,7 ;8, Mac OSX and Linux

Performance is not guaranteed if the following specification cannot be reached 

- **DirectX 9.0 or later installed**
- **2.0 GHz processor(Recommend dual core 2.8GHz or more)**
- **USB 2.0 Port or USB3.0 Port**
- **CD-ROM drive**
- **2GB RAM(Recommend 2GB or more)**
- **200 MB Free HDD**

Performance is dependent on the PC's graphics card.

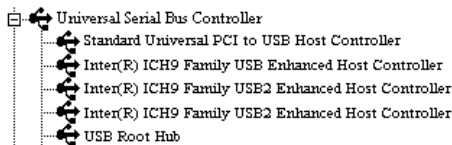
USB 2.0 is supported on Windows ® XP, Vista, 7 and 8. also Mac OSX, Linux(Kernel 2.6 or Above).

Windows XP Pro must have Service Pack 2 (or later) installed in order for the camera to function correctly. To check if you have USB2.0 installed on your computer goes to:

Start > Settings > Control Panel > System... or 'right-click' on “My Computer” and select “properties” from the context menu...

Click on the “Hardware” tab and then onto the button “Device Manager”;

Within Universal Serial Bus controllers (USB controllers) you will see a list of USB devices installed on your machine. In this example the red arrow is indicating the USB2.0 device. USB2.0 controllers may be labeled as USB2.0 controllers, however they may also be labeled as “Enhanced” or “Standard Enhanced” controllers. The so-called “Standard” or “Standard Universal” controllers are for the slower USB1.x system.

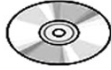


Package Contents

If you find any contents missing or damaged, contact the place of purchase.



Camera



Software CD



USB Cable



Manual



Calibration slide*



Fixed lens adaptor*



Focusable lens adaptor*



CS-Mount Ring*



Lens adaptor for eyepiece tube*



USB Cable* (90° connector)

“*” marked parts are optional accessories

ToupSee is a free basic software, supporting DirectShow and Twain interface, which can facilitate the video preview preservation, video record and picture management operation.

ToupView (Advanced measurement and analysis) is available for option at extra cost. Not in the standard package.



ToupSee



ToupView

Product Safety Information

This product is in compliance with the low-voltage, EMC, Health and Safety Regulation:

26/95/EC, EN62471:2008

2004/108/EC, EN61326-1:2006,

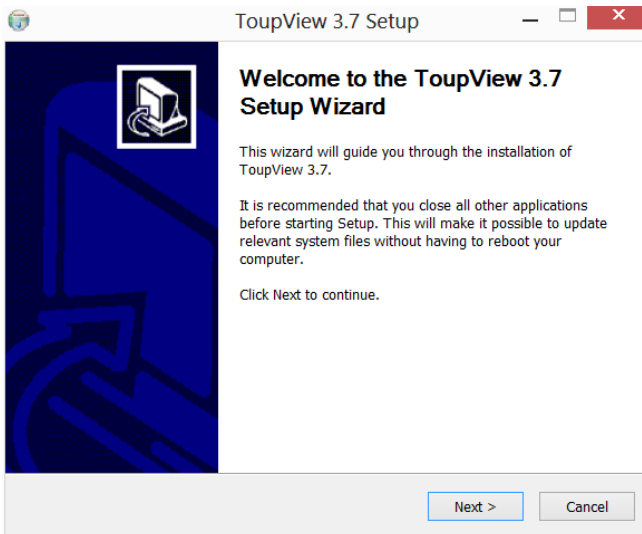
EN 61000-3-2:2006+A2:2009、EN 61000-3-3:2008

Installing the Software

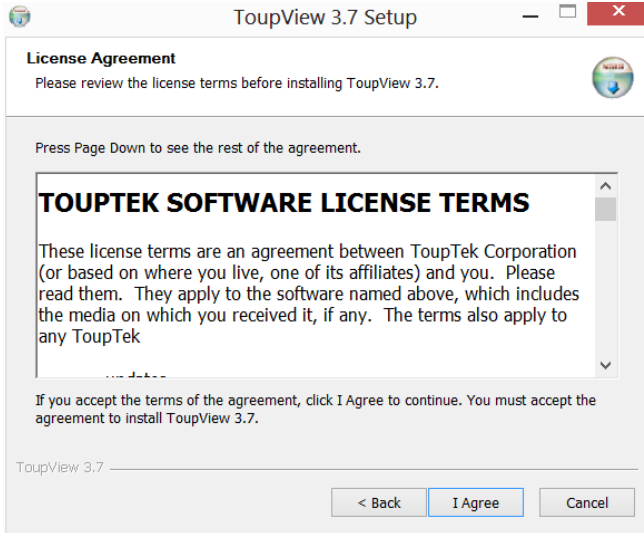
1. Insert CD into CD-ROM drive, the CD Autorun will pop up the following start GUI



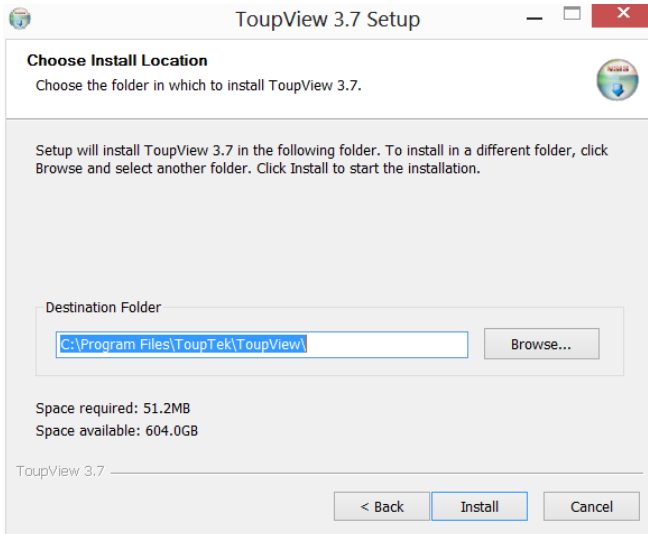
2. Click to select the “Install Application” (This will start to install for example, ToupView)



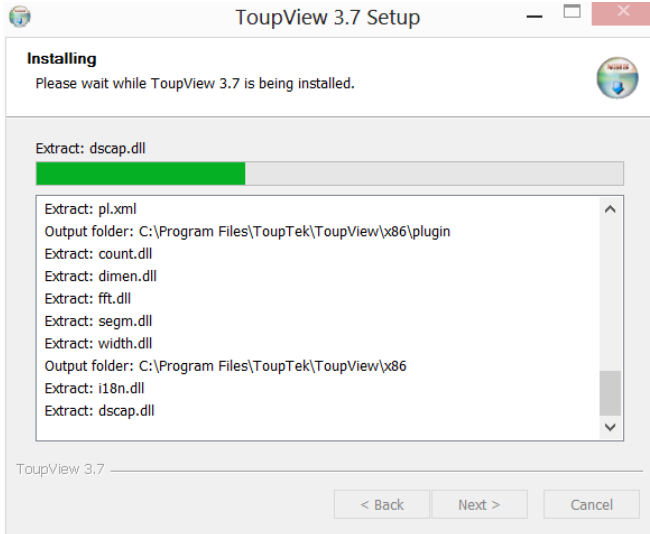
3. Click the “Next”



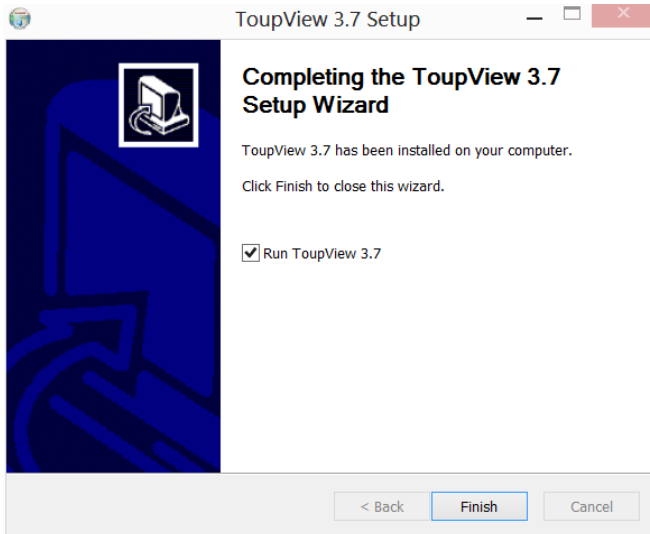
4. Click the “I Agree”




5. Select the installation path. If the installation path in the default one, just click the “Install”.



The progress of installation.....




6. Click the “Finish”, end of the installation (after the success of installation, the shortcut icon “” ToupView will appear on the desktop)

Camera Connect

Connect the Camera to the Microscope

The left hand holds the camera and makes the dust cover down, the right hand rotate the dust cover clockwise. Keep the interface vertically downward in the process. Connect the camera with the optical adaptor of microscope photography channel, note: try to keep the camera and adaptor in a horizontal position during the installation, to prevent tiny dust due to friction to pollute camera sensor surface and optical center of lens of internal interface.

Connect the Camera to the Computer

Insert the USB cable into a free USB slot on the computer (Requires **USB 2.0 or USB3.0** port). 

“New Hardware Found” or “Installing device driver software” displays at the bottom right of your PC screen. The camera is recognized.

The found new hardware wizard would start, Select “Install the software automatically”



Finish (If unidentified publisher/ Windows Logo Testing appear, select continue anyway)

NOTE:

- **Plug the USB connector to board USB port directly on the back of the PC is recommended,**
- **Do NOT use any other cable to extend the USB cable.**

Warranty

TOUPTEK PHOTONICS Three Year Limited Warranty



TOUPTEK PHOTONICS warrants its products to be free from the date of purchase this product for three years. **TOUPTEK PHOTONICS** will repair or replace such product or part thereof which, upon inspection by **TOUPTEK PHOTONICS**, is found to be defective in materials or workmanship. As a condition to the obligation of **TOUPTEK PHOTONICS** to repair or replace such product, the product must be returned to **TOUPTEK PHOTONICS** together with proof-of-purchase satisfactory to **TOUPTEK PHOTONICS**.

All returns must be accompanied by a written statement setting forth the name, address and daytime telephone number of the owner, together with a brief description of any claimed defects. Parts or product for which replacement is made shall become the property of **TOUPTEK PHOTONICS**.

The customer shall be responsible for all costs of transportation and insurance, both to and from the factory of **TOUPTEK PHOTONICS**, and shall be required to prepay such costs.

TOUPTEK PHOTONICS shall use reasonable effort to repair or replace any accessory covered by this warranty within thirty days of receipt. In the event repair or replacement shall require more than thirty days, **TOUPTEK PHOTONICS** shall notify the customer accordingly. **TOUPTEK PHOTONICS** reserves the right to replace any product which has been discontinued from its product line with a new product of comparable value and function.

License Agreement

The software and accompanying documentation are protected by the International copyright laws. Any use of this software in violation of copyright laws or the terms of this agreement will be prosecuted to the best of our ability.

TOUPTEK PHOTONICS authorizes you to make archival copies of this software for the sole purpose of back-up and protecting your investment from loss. Under no circumstances may you copy this software or documentation for the purposes of distribution to others. You may not distribute, modify, adapt, translate, reverse engineer, recompile,

disassemble or otherwise attempt to discover the source code of the Software. Any information supplied by **TOUPTEK PHOTONICS** or obtained by you, as permitted hereunder, may only be used by and may not be disclosed to any third party or used to create any software which is substantially similar to the Software.